

How can I configure my Windows Media Center PC and My Movies mobile application for Wake On Lan?

Question:

How can I configure my Windows Media Center PC and My Movies mobile application for Wake On Lan?

Answer:

The My Movies mobile applications on iPhone, iPad and Android supports powering on your Windows Media Center PC through Wake On Lan. This guide will help you configure your Windows Media Center PC to be used with Wake On Lan.

Wake On Lan is a technology allowing for your machine to wake when a special network package is sent to the computer. This allows the remote control part of the My Movies mobile applications to both power on and power off your Windows Media Center PC.

Computer Configuration

There are various important points to notice on Wake On Lan:

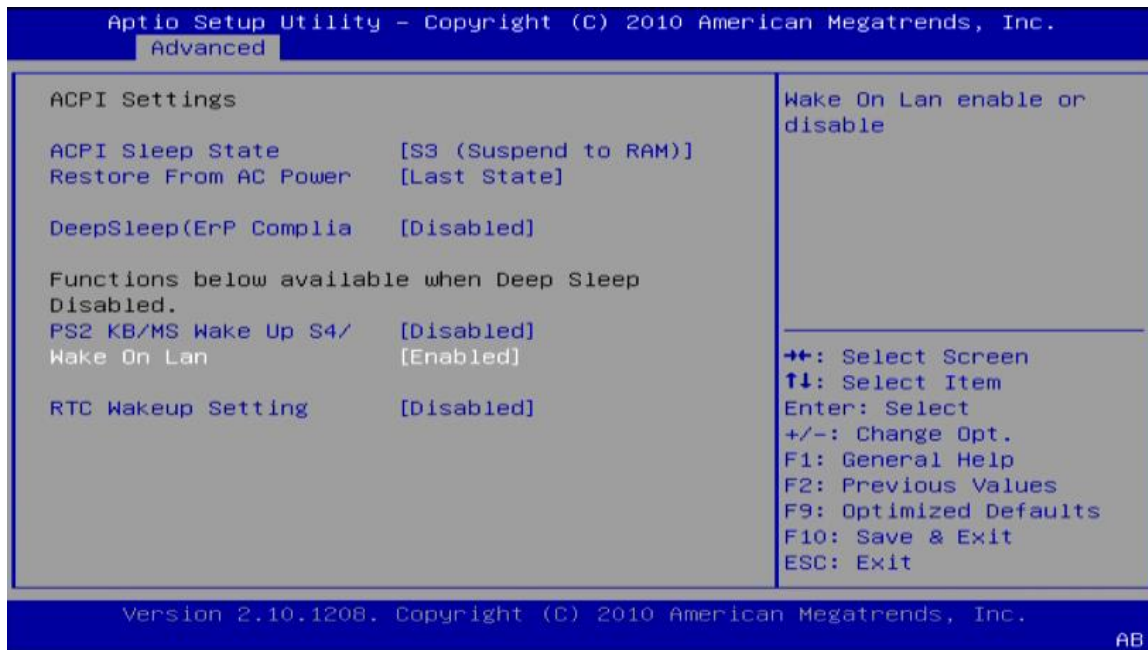
- Your computer must be connected to wired network. You cannot use Wake On Lan through wireless network.
- Your computers mainboard and/or network card must support Wake On Lan, which not all do.
- Under Windows 7, some computers only supports Wake On Lan when the computer is in standby, while a fully powered off machine cannot be powered on. Under Windows 8, fully powered off machines cannot be powered on. See details here: <http://support.microsoft.com/kb/2776718/en-us>

The configuration of Wake On Lan can be complicated. If you have a novice user, we recommend getting an advanced or a professional user to help you with the communication.

Step 1:

Check for a Wake On Lan option in your computers BIOS, and enable it. The BIOS is typically entered by pressing Del, F1 or F2 when starting your machine, before Windows starts, this depends on the computer, and therefore cannot be commonly described. Similar, the location of the Wake On Lan option also differs in different computer BIOSes, and you therefore need to search for it - if your computer does not support Wake On Lan, the configuration in BIOS will not be available.

How can I configure my Windows Media Center PC and My Movies mobile application for Wake On Lan?

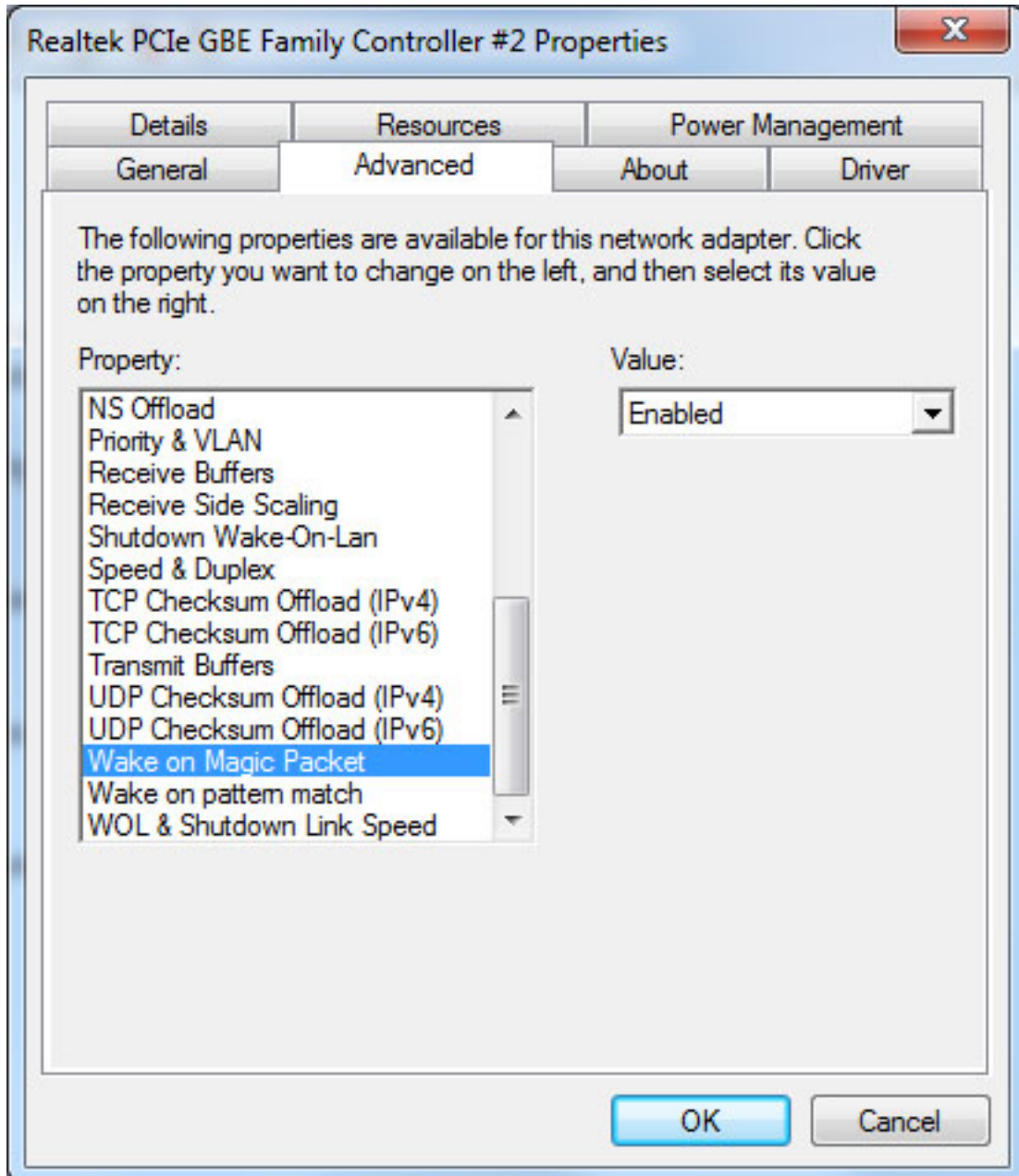


Step 2:

Start Windows, and open "Device Manager" in Control Panel, and locate your primary network card under "Network adapters", and right click to open properties for the device.

Under the "Advanced" tab, locate the property "Wake on Magic Packet", and make sure that this is set to "Enabled". If you cannot locate this property in the list, your network card does not support Wake On Lan.

How can I configure my Windows Media Center PC and My Movies mobile application for Wake On Lan?



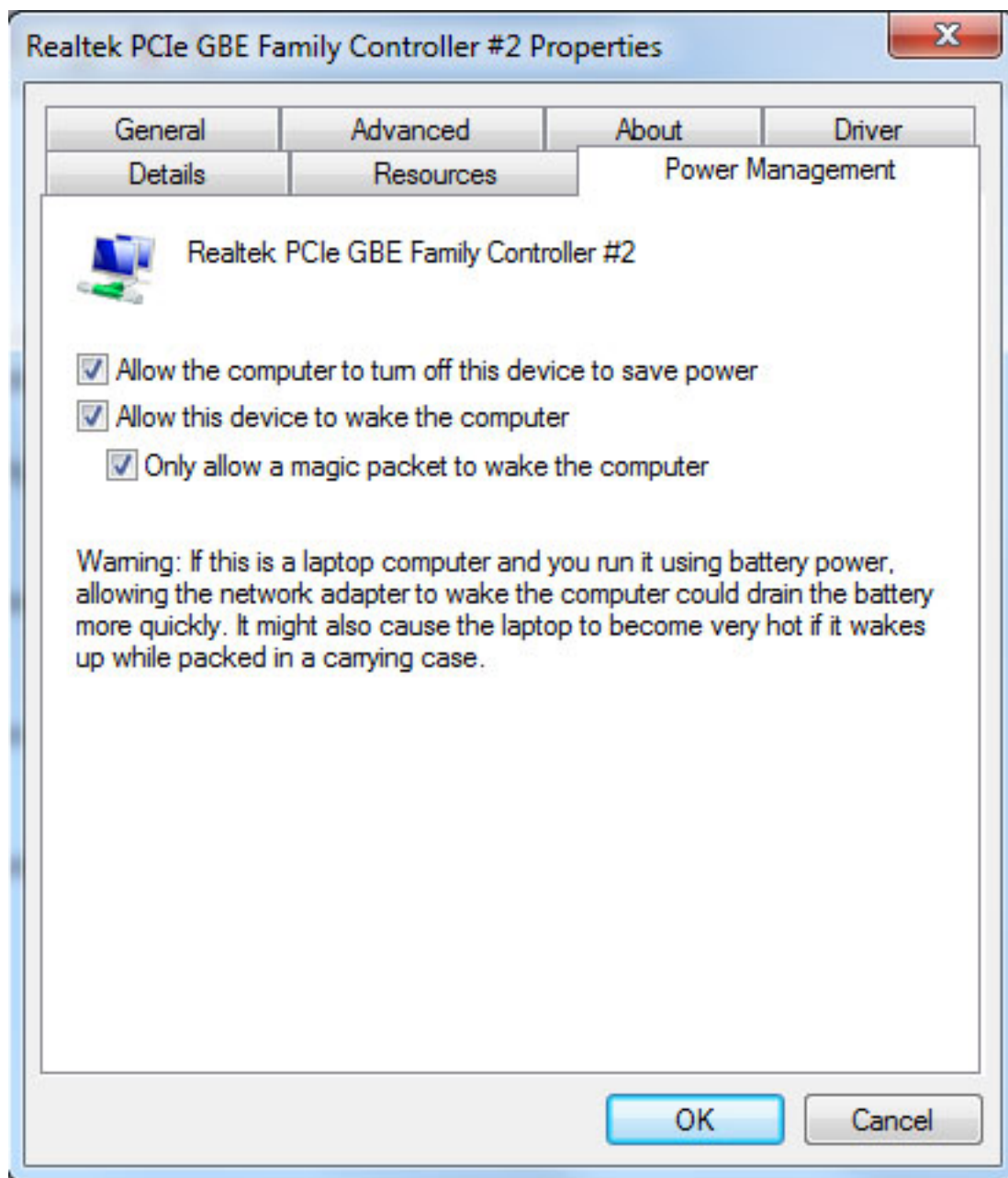
Step 3:

Still having the network card properties page open, open the "Power Management" tab. Check the options "Allow the computer to turn off this device to save power", and the option "Allow this device to wake the computer".

The option "Only allow a magic packet to wake the computer" must also be checked, as any network query against the computer otherwise will cause the computer to wake. Since the My Movies mobile applications sends network commands to query the state of the computer, this would cause the computer to wake in unwanted

How can I configure my Windows Media Center PC and My Movies mobile application for Wake On Lan?

situations.



Step 4:

If your machine is woken from sleep, the default settings in Windows will by require you to input your account password before entering Windows.

The My Movies mobile application cannot control the PC when on the login screen, and you therefore must open "Power Options" in "Control Panel", and on the left side click the link "Require a password on wake-up". The radiobutton "Require a password

How can I configure my Windows Media Center PC and My Movies mobile application for Wake On Lan?

(recommended)" must be changed to "Don't require a password".

Step 5:

It is recommended that you configure your Windows Media Center PC to automatically log in when the computer starts, as the My Movies mobile application also here is unable to control the PC until you are logged in.

Run the command "netplwiz", which will open a dialog named "User Accounts". On the first page, uncheck the box "Users must enter a username and password to use this computer.", and press "Apply". You will not be prompted to input the username and password for the account you would like the computer to automatically log into.

Your computer is now configured for Wake On Lan.

Mobile Device Configuration

To use the Wake On Lan feature in the Remote Control part of the My Movies mobile applications, the device must be manually configured. You cannot use automatically detected hosts with Wake On Lan, and Wake On Lan also only works with the Host PC, and cannot be used with Windows Media Center Extenders.

It is recommended that you configure a static IP for your Windows Media Center PC, either through your router by assigning a static IP address for the Mac Address, or by setting a static IP address on the Windows Media Center PC itself, outside of the IP scope that the router is configured to use for DHCP.

Step 1:

Power on your Windows Media Center PC, and make sure that it is not in standby. Windows Media Center is not required to be running during this process.

Step 2:

Open "Settings" on the My Movies mobile application, click the "Remote Control" area, and click "Enable".

Step 3:

Click "Add Player", and select "My Movies for WMC".

Step 4:

Enter the name the device should appear with in the Remote Control section, and enter the IP address of the Windows Media Center PC in the "IP Address" box.

Step 5:

How can I configure my Windows Media Center PC and My Movies mobile application for Wake On Lan?

Click on the "Enable" checkbox under "Wake On Lan". It is important that you do not check this until you have entered the IP address of the Windows Media Center PC, as the mobile application in most situations can detect the Mac Address of the computer.

Step 6:

If the Mac Address is not automatically filled in, you must enter the Mac Address in the format "XX:XX:XX:XX:XX:XX". You can typically determine the device Mac address in your router, otherwise, you can run "cmd" on your computer, and type "ipconfig /all" where you can locate your network adapter, and locate it's Mac address.

Step 7:

You can optionally configure the timeout for the for the My Movies mobile application to wait for your machine to start before it treats the lack of response as a lost connection. The default is 120 seconds, and if your computer takes longer than this to start up and be ready, you must increase this value.

The My Movies mobile application can now be used to power on and off your Windows Media Center PC through Wake On Lan.

My Movies Knowledge Base

<https://kb.mymovies.dk/KnowledgebaseArticle50085.aspx>